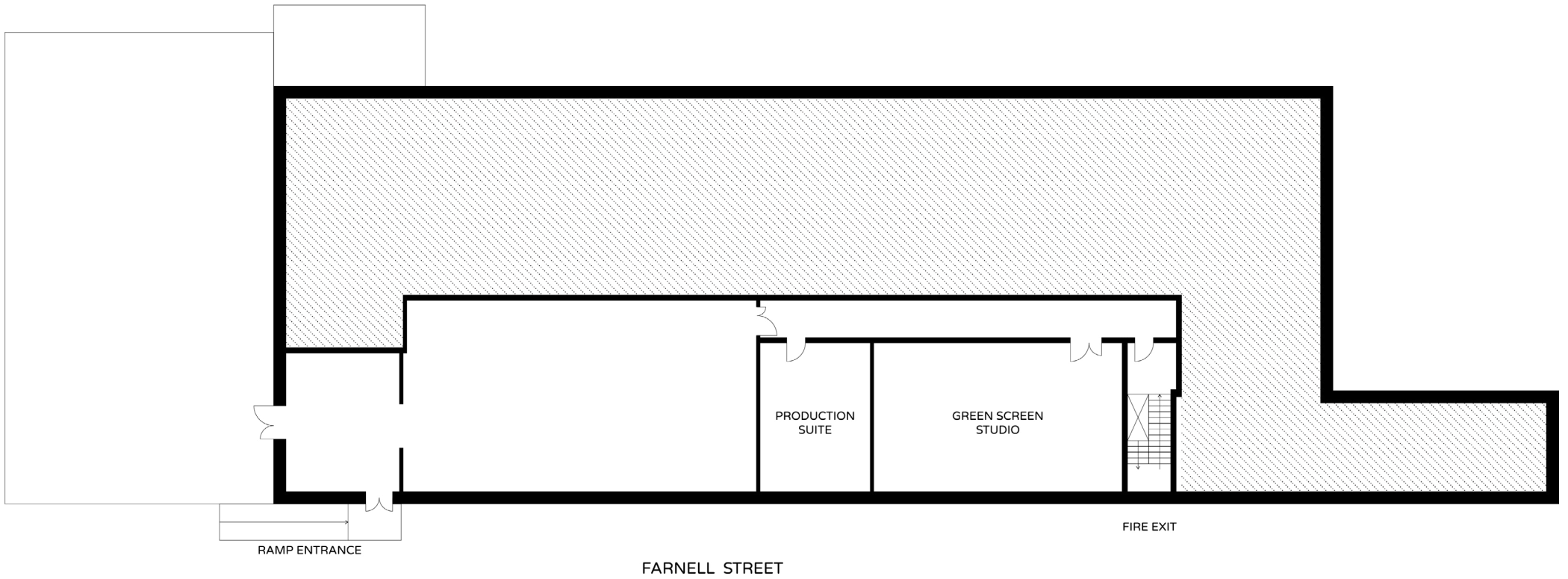
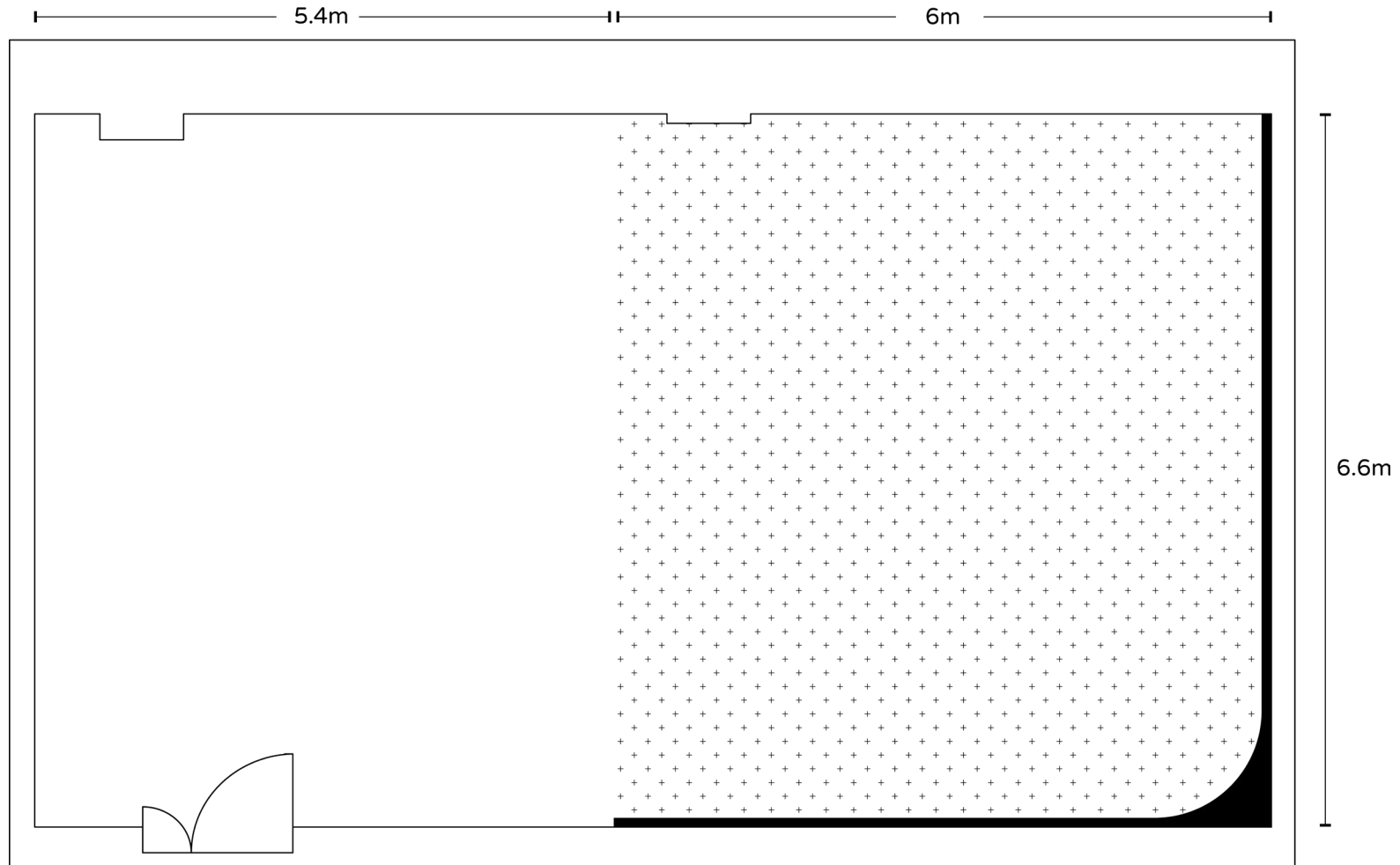


GLUE FACTORY - FLOOR PLAN

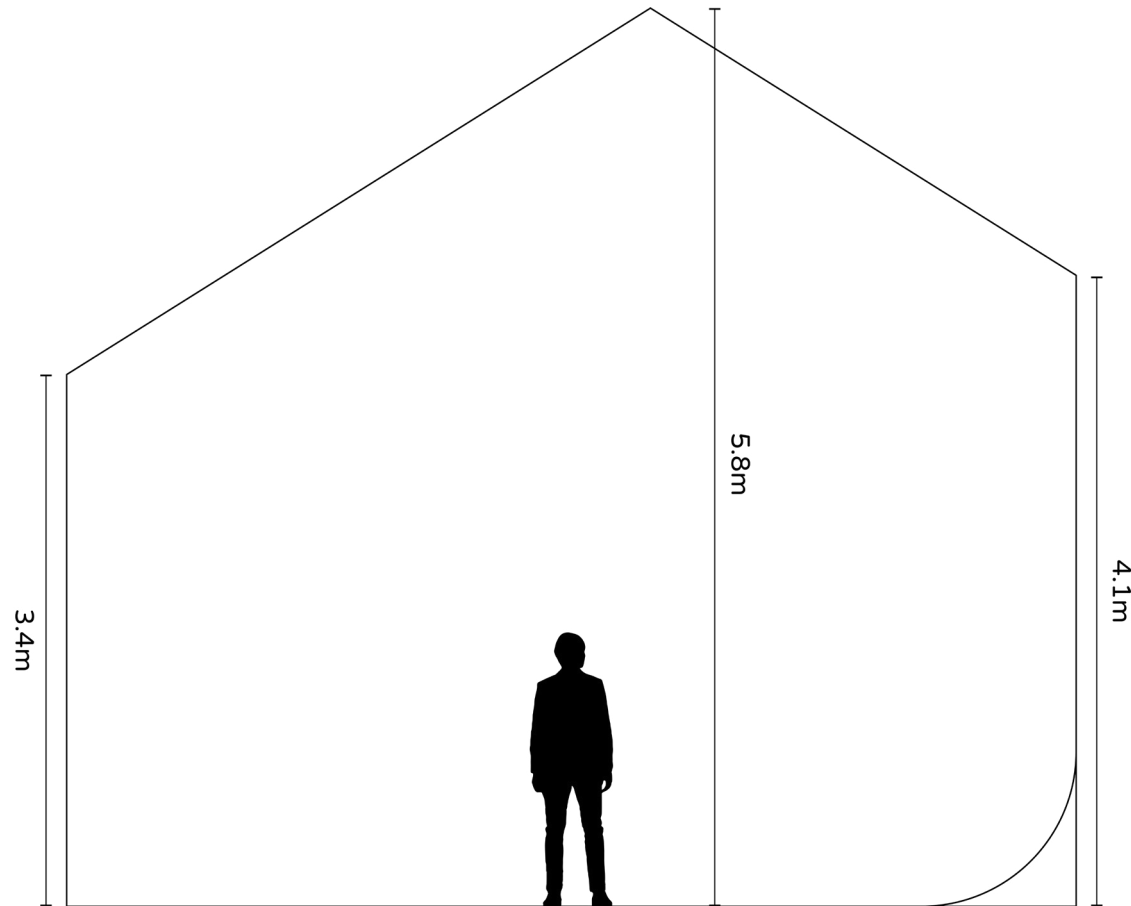
Entrance to the studio is via the ramp on Farnell Street



GREEN SCREEN STUDIO - FLOOR PLAN

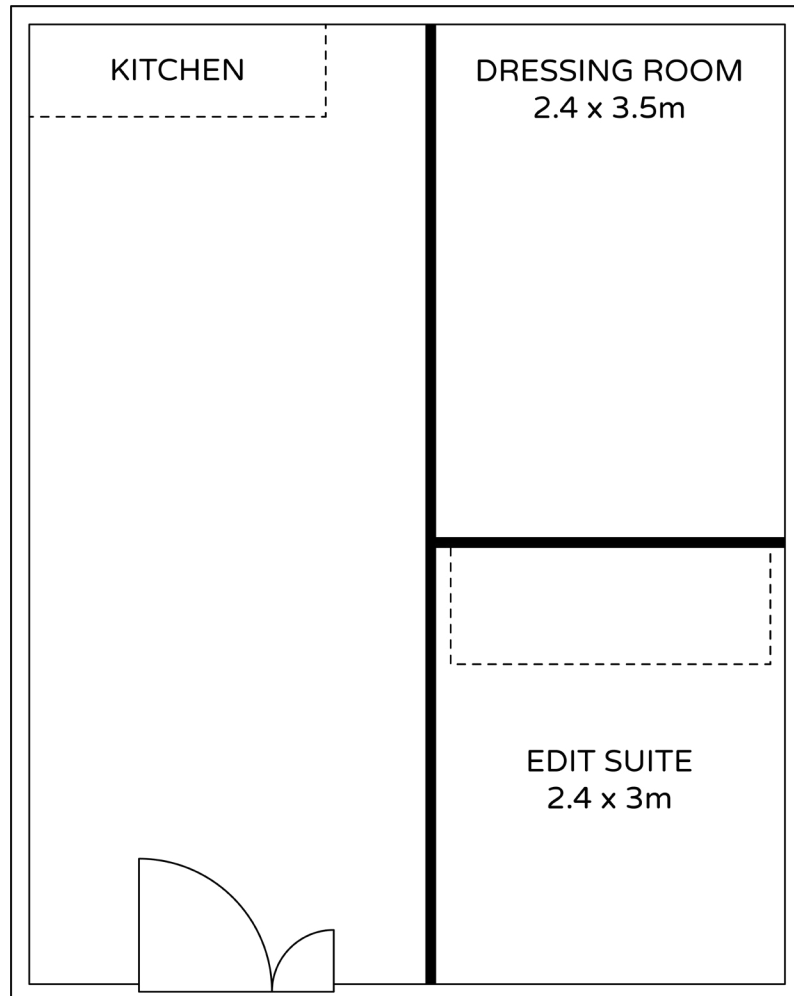


GREEN SCREEN STUDIO - FLOOR PLAN



- 807 sq/ft studio (6.6m x 11.4m)
- 426 sq/ft green screen area (6.6m x 6m)
- Ceiling height 5.8m at apex, 3.4m at lowest point
- Two-sided green screen with 1m radius curve
- Prelit with 4 x Aputure Nova P300c ceiling rigged lights and 2x Aputure Nova P300C floor lights
- 300A Power (64, 32, 16, 13A Outlets)
- Fully blacked out for light control
- Acoustically treated
- 2.7m Coloramas available
- Street level access
- High-speed wifi

CLIENT PRODUCTION SUITE - FLOOR PLAN



CLIENT PRODUCTION SUITE

- Separate production and services area with every hire
- Wardrobe and hair/makeup area
- Private Kitchen

POST PRODUCTION & EDITING

HARDWARE

- High-spec gaming PC with 24GB VRAM (RTX3090 GPU), 128GB DDR4 RAM, AMD Ryzen 9 5950X 16-core processor, 1TB M.2 SSD
- 1x BenQ 4K 27" UHD calibrated monitor, 2x Dell 27"QHD monitors
- Samsung 65" TV (wall-mounted)
- 2x PreSonus 4.5" Powered Studio Monitors
- High speed wired internet connection (120mbps)

SOFTWARE

- Adobe Creative Suite
- Cinema 4D S24
- Red Giant
- Microsoft Office
- Backup solutions via Dropbox (cloud) and NAS (local)

ENVIRONMENT

- Light-controlled
- Grey walls for optimum light balance
- 2m custom sit/stand desk
- Editor chair and 4-person sofa
- Wall-mounted TV and speakers